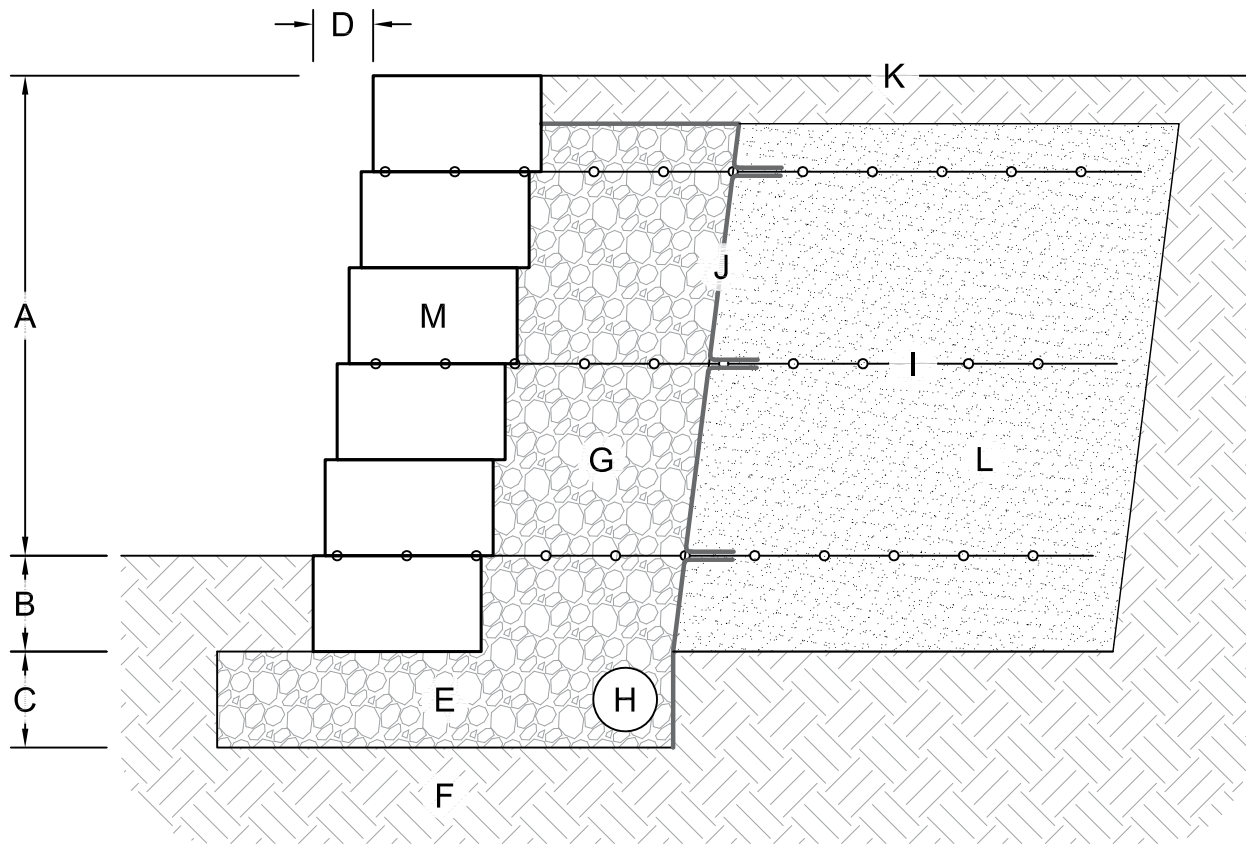


PRELIMINARY DETAIL
NOT FOR FINAL CONSTRUCTION



TYPICAL REINFORCED RETAINING SECTION

(NO SCALE)

- A. Wall height above grade (varies by design)
- B. Wall buried beneath grade (varies by design, min. 6 in.)
- C. Leveling pad depth (varies by design, min. 6 in.)
- D. Min. 3/4" setback per course (7' batter) recommended
- E. Crushed stone leveling pad
- F. Foundation soil compacted to 95% max. dry density
- G. Drainstone (ASTM #57, min. 12" behind wall)
- H. 4" corrugated perforated drain pipe
- I. Geogrid reinforcement (lengths and vertical placement per design)
- J. Min. 3.5 oz. non-woven geotextile fabric
- K. Finish grade to drain away from the wall
- L. Reinforced soil compacted to 95% max. dry density
- M. Kodah wall blocks

This drawing is for reference only. Determination of the suitability and/or manner of use of any details contained in this document is the sole responsibility of the design engineer of record. Final project designs, including all construction details, shall be prepared by a licensed professional engineer using the actual conditions of the proposed site.

DRAWN BY: BOB/CARISSA

TITLE:

APPROVED BY:

**KODAH TYPICAL REINFORCED
RETAINING WALL**

DATE: 4/1/2024

SHEET NO.: 1 OF 1

DRAWING TITLE: Kodah Typical Cross Sections [rev 2024].dwg



05481 US 31 SOUTH, CHARLEVOIX, MI 49720
877-777-6558 • highformat.com