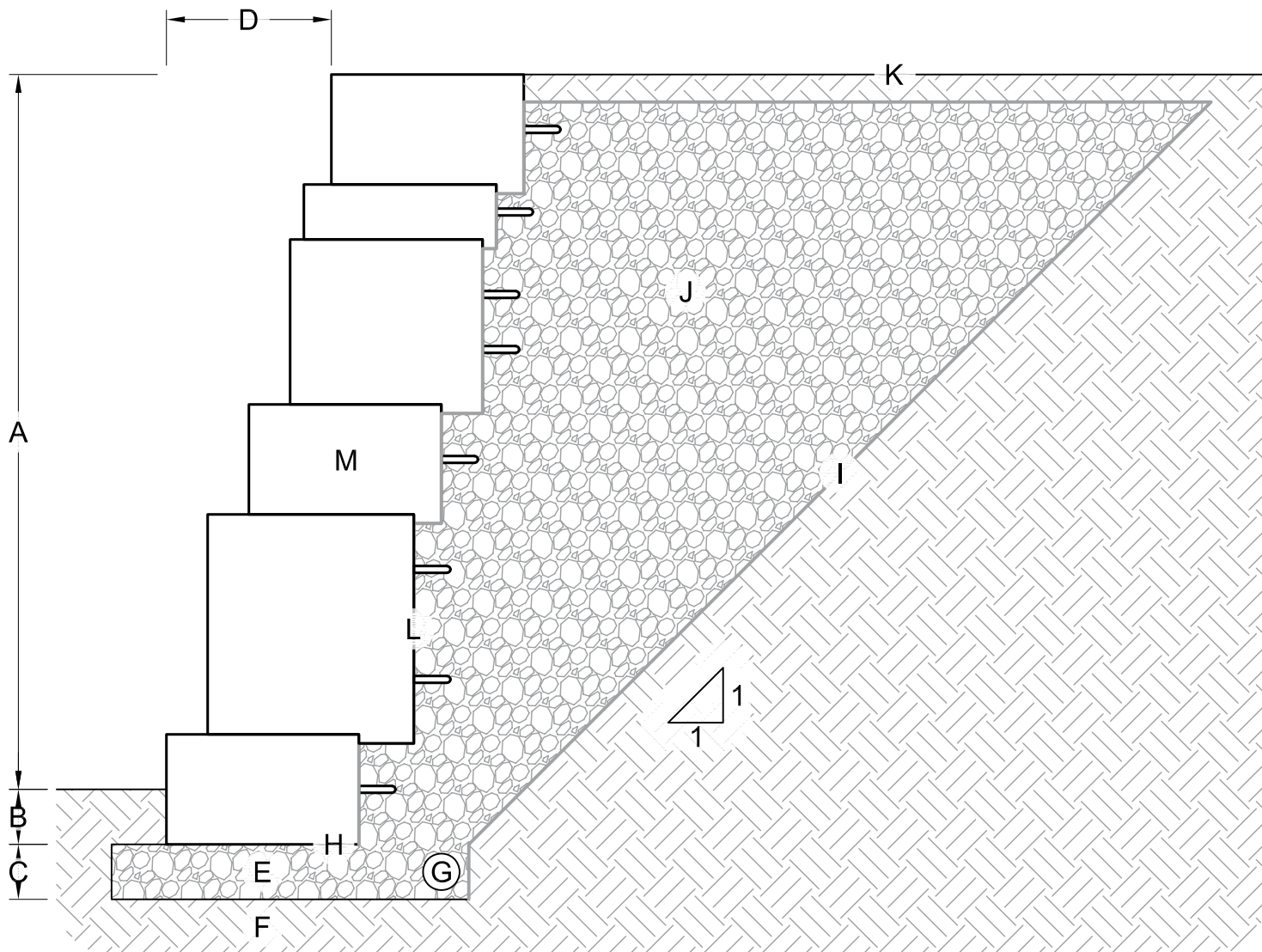


PRELIMINARY DETAIL
NOT FOR FINAL CONSTRUCTION



TYPICAL GRAVITY RETAINING WALL WITH AGGREGATE WEDGE BACKFILL
(NO SCALE)

- A. Wall height above grade (varies)
- B. Wall buried beneath grade (varies by design, min. 6 in.)
- C. Leveling pad depth (varies by design, min. 6 in.)
- D. 3" setback per 12" vertical (14°)
- E. Crushed stone leveling pad
- F. Foundation soil compacted to 95% max. dry density
- G. 4" corrugated perforated drain pipe
- H. Shear heel removed from base block
- I. Min. 3.5 oz. non-woven geotextile fabric (recommended)
- J. Drainstone (ASTM #57), min. 12", installed on a 1H:1V slope behind wall
- K. Finish grade to drain away from the wall
- L. Non-woven geotextile fabric at back of blocks and top of drainstone (required)
- M. Outcropping wall blocks

This drawing is for reference only. Determination of the suitability and/or manner of use of any details contained in this document is the sole responsibility of the design engineer of record. Final project designs, including all construction details, shall be prepared by a licensed professional engineer using the actual conditions of the proposed site.

DRAWN BY: BOB/CARISSA

TITLE:

APPROVED BY:

OUTCROPPING RETAINING WALL WITH AGGREGATE WEDGE BACKFILL

DATE: 11/17/2021

SHEET NO.: 1 OF 1

DRAWING TITLE: Outcropping Typical Details [rev 2024].dwg



05481 US 31 SOUTH, CHARLEVOIX, MI 49720
877-777-6558 • highformat.com