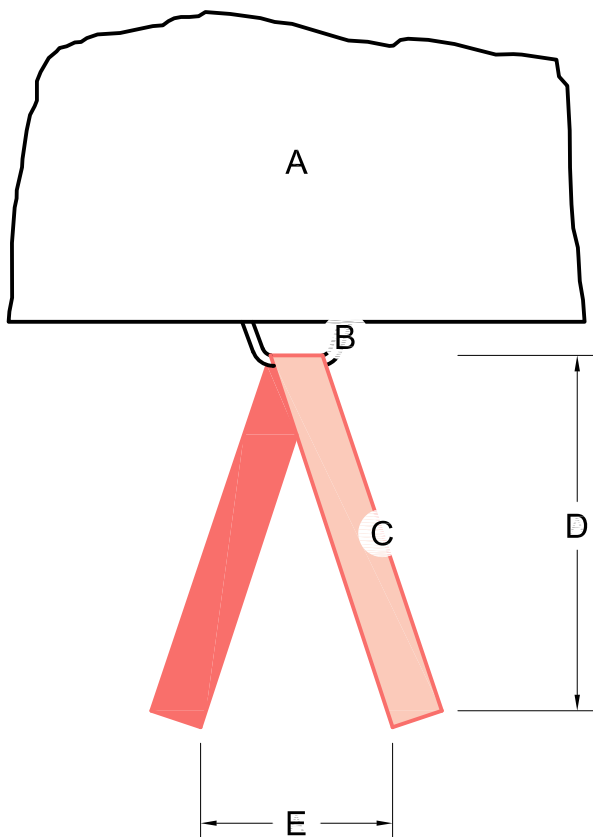
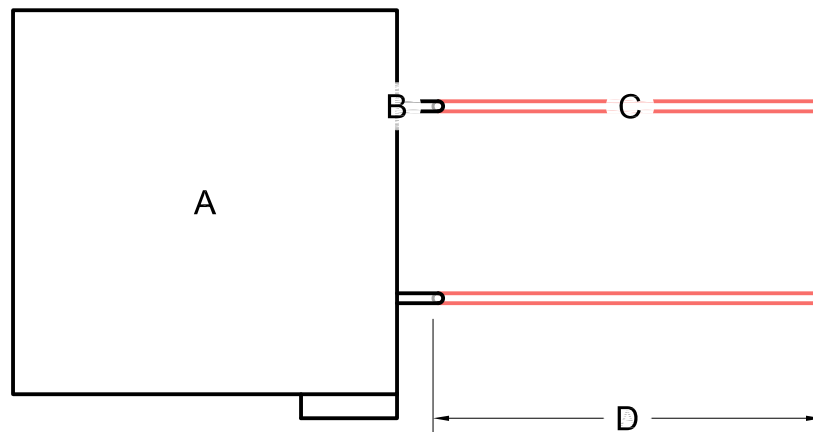


PRELIMINARY DETAIL
NOT FOR FINAL CONSTRUCTION

PLAN VIEW



PROFILE VIEW



- A. Outcropping wall block
- B. Galvanized lift hook (required)
- C. Paraweb strap (required for each lift hook)
- D. Strap embedment depth (varies per design)
- E. 12-24" separation between straps ends

TYPICAL PARAWEB STRAP CONNECTION

(NO SCALE)

DRAWN BY: BOB/CARISSA

TITLE:

APPROVED BY:

OUTCROPPING PARAWEB STRAP CONNECTION

DATE: 11/17/2021

SHEET NO.: 1 OF 1

DRAWING TITLE: Outcropping Typical Details.dwg



05481 US 31 SOUTH, CHARLEVOIX, MI 49720
877-777-6558 • highformat.com